

# Pocket Router

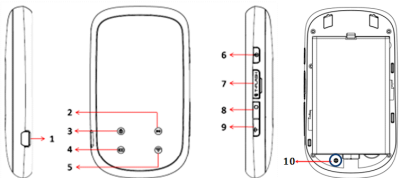
## Quick Guide



## About Your Device

Your Pocket Router allows you to access internet anywhere through 3G network. It is approved for use on the UMTS 850, 1900 and 2100 networks, and GSM 850, 900, 1800 and 1900 networks. Contact your service provider for more information about the networks.

## Getting to Know your Device



- 1---- USB Port
- 2---- 3G LED
- 3---- Power LED
- 4---- Battery LED
- 5---- WIFI LED

6---- Power Key: Press and hold for 2sec.  
to switch the device on and off.

7---- Micro SD Slot

8---- Manual Connect Key

9---- 3G/LAN Switch Key

10-- Reset Key

## LED Indication

LED	Status	Remark
Power	Keep green	Power on / Charging when power on or power off
	Fast blinking	The key pressing accept
3G	Keep green	The 2G/3G network is ready
	Blinking in green	Dial-up successfully and Data transferring
	Fast blinking in green	Roaming
	Blinking in green and red	Initializing/ Switch to dial or not
	Blinking in red	No USIM card, PIN locked or no service
Battery	Keep green	Battery power level is enough
	Blinking in g	Charging

	reen	
	Blinking in red	Battery power level is low
WIFI	Keep green	WIFI activated
	Blink once	Press Reset key to restore factory default settings

## Restore to default

1. If you forget the changes of settings, you can restore to factory default settings and reconfigure the settings.
2. If you forget Administrator password or Wireless network key, you can press the **Reset key** to restore factory default settings.

### ► How to reset

Use a right size stick, insert into

the hole vertically, press and hold for 2 seconds.



## The requirements of your PC

1. Wireless LAN Adaptor
2. Windows 2000, XP, Vista, WIN7 (or above these OS) equipped with:
  - TCP/IP Protocol
  - IE 6.0(or above) for web-based configuration

# Getting Started

## Insert (U)SIM card and battery

**Tips:** Always switch the device off and disconnect the charger before removing the battery.

1. Remove the back cover and the battery;



2. Insert the (U)SIM card. Ensure that the contact area on the card is facing down and that the beveled corner on the card is facing the beveled corner on the holder.



3. Align the battery contacts with the battery compartment connectors, and insert the battery. Replace the back cover lastly.



## Insert the memory card

1. Power off the device. And then open the memory card slot cover.

2. Insert a compatible memory card in the slot. Ensure that the contact area on the card is facing down and towards the slot.



3. Push the card in. You can hear a click when the card locks into place.

**Tips:** The capability of the memory card is up to 32GB.

## Charge the battery

Your battery has been partially charged at the factory. If the device indicates a low charge, do the following:

1. Connect the charger to a wall outlet.
2. Connect the USB charger plug to your device' s USB port.
3. When the device indicates a full charge, disconnect the charger from the device, then from the wall outlet.





**Tips:** Don't plug USB cable or charger during powering on the device; otherwise it may make the device abnormal. If it occurs, Please restart your device.

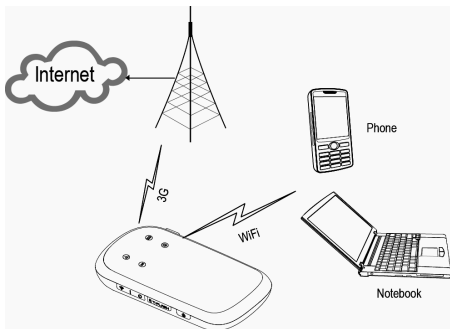
# WIFI Router

## How to Use your router

### 1. Use U(SIM) card

Steps:

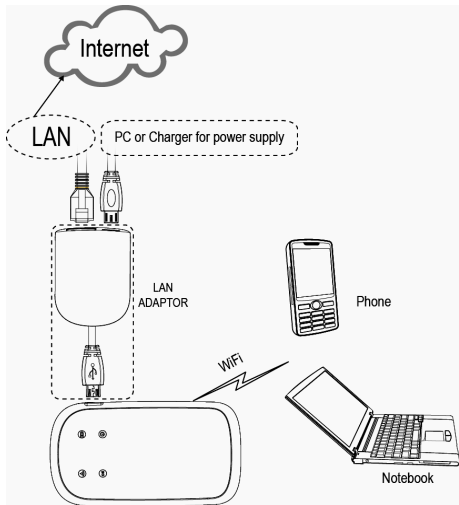
- (1) Insert U(SIM card) and power on your router.
- (2) Establish the WIFI connection
- (3) Access the Internet



### 2. Use a LAN adapter (optional)

Steps:

- (1) Connect your router to LAN via a LAN adapter
- (2) Power on your router
- (3) Establish the WIFI connection
- (4) Access the Internet



➤ **How to use the LAN adapter :**

- a. The attached USB cable on the LAN adapter is used for connect with your router .

b. And there are still two ports on LAN adapter: The USB port is connected to PC or charger for adapter's power supply via a USB cable. The Ethernet port is used for connect with LAN via an Ethernet cable.

**Tips:** If your router and the local internet use the same LAN IP address, please change your router's LAN IP address. ([Refer to LAN settings](#))

## Configure your PC

1. Press and hold Power Key of the Pocket Router for 2sec. to switch on, and then enable the computer's WIFI.
2. The default network name (SSID) is "Pocket\_Router", connect with it.

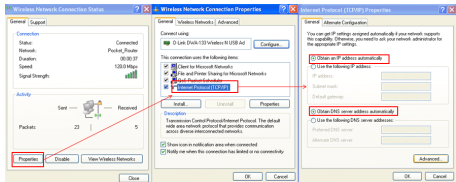


3. To connect WIFI Router directly, ensure your computer have set as "Obtain IP

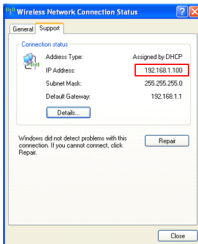
address automatically” and “DNS server address automatically” .

Steps:

Click **Wireless Network Connections Status**→**Properties**→**Internet Protocol (TCP/IP)** → “**Obtain IP address automatically**” and “**DNS server address automatically**” .



4. After connected with WIFI router, you can check the **IP address** assigned by DHCP server .



## Tips:

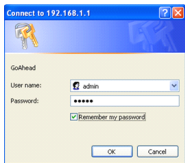
1. As default, the WIFI router is an open wireless router, user can access it freely (no password).

2. To browse internet after connecting, make sure your (U)SIM with available service has installed in (U)SIM slot of the Pocket Router, and the 3G LED lights green blinking.

## Login to WEB Management Page

1. Open the web browser, access <http://192.168.1.1>, the default login user name and password are: **admin**.

Address  192.168.1.1



2. Enter the WEB management page and configure your WIFI router Settings.

### Tips:

<http://192.168.1.1> is the default LAN IP address, after you modified it (refer to LAN settings), you should enter the corresponding IP address.

## Configure WIFI Router Settings

### 1. Quick Settings

Here are telling you how to configure the settings that most users need, for anything more configuring, please see **Internet settings**.



## 1.1 Account: Click Internet settings->WAN settings

Your device is set to access internet via 3G networks as default in WIFI Router mode.

The predefined APN profile is auto matching with your U(SIM) card.

### ➤ Account

The default account is auto matching with your U(SIM) by router. If you select this account, the APN, Dial Number, User name, password and Auth need not to be modified.

If you select user customize(select and click **Default**), contact with your service provider to get the APN, Dial Number, User name, password and Auth information.

3G Mode	
Account	China Unicom <input type="button" value="Default"/>
APN	UNINET
Dial Number	*99***1#
User name	
Password	
Auth	NONE
Operation Mode	Automatic
<input type="button" value="Apply"/> <input type="button" value="Cancel"/>	

### ➤ Operation Mode

You can select **Automatic** or **Manual**.

If you select **Automatic**, the router will access internet automatically at anytime when you power on your router.

If you select **Manual**, the internet connection should be established by press the **Manual Connect** key.

### **Tips:**

1. When the 3G LED is blinking with green, it means dial-up successfully and you can access internet.

2. In manual mode, when dial-up successfully, press and hold the 3G key for 2sec., it will disconnect from internet and the 3G LED is keeping green at this time.

3. In manual mode, when in switching, the 3G LED is blinking in green and red.

### **1.2 SSID: Click Wireless Settings->Basic**

The SSID is a unique name of your wireless network. It is not exceeding 32 characters.

The default SSID is: **Pocket\_Router**, you

can change this to a personal wireless name.

Network Name(SSID)

Pocket\_Router

**Tips:** After applied your modification, the WIFI connection will disconnect, connect to the new SSID once your computer find it.

### 1.3 WIFI key: Click **Wireless Settings**→**Security**

Set a WIFI key for your wireless network to prevent unauthorized access and monitoring.

There are several types of security mode; the mostly used type is **WPA-WSK** or **WPA2-PSK**.

**WPA Algorithms:** You can select **TKIP**, **AES** or **TKIPAES**.

**Pass Phrase:** input at least 8 characters.

**Key Renewal Interval:** Set key renewal time, from 0 sec. ~3600 sec.

WPA	
WPA Algorithms	<input type="radio"/> TKIP <input checked="" type="radio"/> AES <input type="radio"/> TKIPAES
Pass Phrase	12345678
Key Renewal Interval	3600 seconds (0 ~ 3600)

## 1.4 Administrator Password: Click Administrator->Management

Administrator Password is only used for login into to WEB management page. You can modify login account and password.

**Account:** The account must not be empty and contain no more than 15 characters.

**Name:** The password must not be empty and contain no more than 15 characters.

Administrator Settings	
Account	admin
Password	*****
<input type="button" value="Apply"/> <input type="button" value="Cancel"/>	

## 2. Advance Settings

### 2.1 Internet Settings

#### (1) WAN settings

There are three WAN connection Types: Static (fixed IP), DHCP (Auto configure) and 3G.

- **Static:** When your network provider applies a fixed IP address to you, you can use this connection type.
- **DHCP:** It needs to ask your ISP if you can connect through a dynamic IP address (or DHCP).
- **3G:** Refer to [Quick settings→Account](#)

## (2)LAN settings (Local Area Network settings)

This page shows the LAN information of your network.

- **IP address & Subnet mask:** This is your router IP address and subnet mask as seen on the LAN. You can configure them.
- **MAC address:** This is your router MAC address.
- **DHCP Type:**

If you select **Disable**, the clients which connect to the router should configure IP address for manually.

If you select **Server**: Your router is set as a DHCP Server; it assigns IP address to the clients connecting to the router, the IP address pool is from “Start IP address” to “End IP address” .

LAN Setup	
IP Address	192.168.1.1
Subnet Mask	255.255.255.0
MAC Address	00:0C:43:30:52:C8
DHCP Type	Server
Start IP Address	192.168.1.100
End IP Address	192.168.1.200
Lease Time	86400
Apply      Cancel	

### (3) DHCP clients list:

This table shows the clients which were given IP addresses by your router.

### (4) Advanced Routing (Static Routing settings):

When the router connected to more than one network, it needs to setup a static router between them. The static router is a predetermined path that network information must reach a specific host or network.

**Tips:** Don't change the content of this tab if you don't thorough understanding.

## (5) QoS (Quality of Service):

This page configures to enable or disable the rules to provide Quality of Service guarantees.

**Tips:** Don't change the content of this tab if you don't thorough understanding.

## 2.2 Wireless settings

### (1) Basic

This page shows the configuration of basic settings for the wireless.

- **Network Mode:** There are 5 modes applied to select: 11b/g mixed mode, 11b only mode, 11g only mode, 11b/g/n mixed mode and 11n only mode (2.4G)

**Tips:** Don't change the content of this list if you don't thorough understanding.

- **Network Name (SSID):** Refer to **Quick settings->SSID**
- **Broadcast Network Name (SSID):**

**Enable:** Allows the SSID to be broadcast on your network and the other device can detect it.

**Disable:** The WIFI stop broadcasting the SSID and the other device cannot detect it.

### ➤ Frequency (Channel):

Select the appropriate channel for your network from the list. It supports configuration automatically. The default channel is **channel 6**.

Wireless Network	
Network Mode	11b/g/n mixed mode ▾
Network Name(SSID)	Pocket_Router <input type="checkbox"/> Hidden <input type="checkbox"/> Isolated <input type="checkbox"/>
Broadcast Network Name (SSID)	<input checked="" type="radio"/> Enable <input type="radio"/> Disable
Frequency (Channel)	2437MHz (Channel 6) ▾

### Tips:

1. The available frequency range is different in every country.
2. If you cannot thorough understanding, please don't change the content of **HT Physical Mode** and others.



## (2) Advanced Wireless Settings

This page shows configuration of the advanced settings for the wireless.

### Tips:

Don't change the content of this tab if you don't thorough understanding.

## (3) Security Settings

This page shows the encryption settings for your wireless network to prevent unauthorized access and monitoring. You can select any security mode that you want to use.

### Security Mode:

"Pocket_Router"	
Security Mode	Disable <input type="button" value="v"/>
<b>Access Policy</b>	
Policy	Disable WEP-AUTO WPA WPA-PSK WPA2 WPA2-PSK
Add a station Mac:	<input type="text"/>

- **Disable:** Your wireless network has no encryption that opens to everyone. (This option is not recommended.)

- **WPAUTO:** This security mode is the encryption method use configurable fixed keys.

**Default Key:** You can select Key1~Key4.

**WEP Keys:** Enter keys in box bar corresponding to **default key**.

**Keys format:**

- Hex:** input 10 or 26 characters.
- ASCII:** input 5 or 13 characters.

Wire Equivalence Protection (WEP)			
Default Key		Key 2 ▾	
WEP Keys	WEP Key 1 :	<input type="text"/>	Hex ▾
	WEP Key 2 :	12345	Hex ▾
	WEP Key 3 :	<input type="text"/>	ASCII
	WEP Key 4 :	<input type="text"/>	Hex ▾

- **WPA, WPA-PSK, WPA2 and WPA2-PSK:** These four security modes are the encryption method with keys changing automatically.

a. **WPA:**

**WPA Algorithms:** You can select TKIP or AES.

**Key Renewal Interval:** Set key renewal time, from 0 sec. ~3600 sec.

**IP address:** Input a valid radius server IP address.

WPA	
WPA Algorithms	<input type="radio"/> TKIP <input checked="" type="radio"/> AES <input type="radio"/> TKIPAES
Key Renewal Interval	<input type="text" value="3600"/> seconds (0 ~ 3600)
Radius Server	
IP Address	<input type="text" value="0"/>
Port	<input type="text" value="1812"/>
Shared Secret	<input type="text" value="ralink"/>
Session Timeout	<input type="text" value="0"/>
Idle Timeout	<input type="text"/>

b. **WPA2:**

This security mode is securer version of WPA.

**WPA Algorithms:** You can select TKIP, AES or TKIPAES

**Pre-Authentication:** You can select Disable or Enable.

WPA	
WPA Algorithms	<input type="radio"/> TKIP <input checked="" type="radio"/> AES <input type="radio"/> TKIPAES
Key Renewal Interval	3600 seconds (0 ~ 3600)
PMK Cache Period	10 minute
Pre-Authentication	<input checked="" type="radio"/> Disable <input type="radio"/> Enable
Radius Server	
IP Address	0
Port	1812
Shared Secret	ralink

c. WPA-PSK, WPA2-PSK: Refer to [Quick settings->WIFI key](#)

## 2.3 Firewall

**Tips:** No changes should be made to Firewall settings without a thorough understanding.

### (1) MAC/IP/Port Filtering

This page shows the configuration of the filter functions for firewall.

You can set up a filter through MAC address, IP address or Network port number.

### (2) Port Forwarding (Virtual Server Settings)

This page shows the configuration of a virtual server to enable external computers to access services provided by the Internet.

### **(3) DMZ**

This page shows the configuration of the DMZ functions.

If a PC cannot run network applications through the Gateway, enable the DMZ function and enter the IP address of the PC.

### **(4) System Security**

This page shows the configuration of the system firewall to protect your Router from attacking, including Remote management, Ping form WAN Filter and SPI firewall.

### **(5) Content Filtering**

This page shows the configuration of the filter URL functions.

You can enter some URLs which you want to forbid visiting.

## 2.4 3G modem Status

This page shows the status of 3G modem, including 3G Modem Status, SIM Card Status and Network information.

## 2.5 Administration settings

### (1) Management settings

#### ➤ Language settings

You can set the system language.



#### ➤ Administrator settings

Refer to [Quick settings→ Administrator settings](#)

#### ➤ NTP Settings

You can modify router time synchronize with host, or use NTP (Network Time Protocol) to achieve system time.

NTP Settings	
Current Time	Sat Jan 1 00:23:49 UTC 2000 <input type="button" value="Sync with host"/>
Time Zone:	(GMT-11:00) Midway Island, Samoa <input type="button" value="v"/>
NTP Server	<input type="text"/> <small>ex: time.nist.gov  ntp0.broad.mit.edu  time.sldtime.gov.tw</small>
NTP synchronization(hours)	<input type="text"/>

## (2) Upload Firmware

You can upload firmware of this router in this page.

### Steps:

- Press “Browse” button to select the firmware image file for the router.
- Press “Apply” to upgrade.

### Upgrade Firmware

Upgrade the Pocket Router firmware to obtain new functionality. **It takes about 1 minute to upload upgrade flash and be patient please. Caution! A corrupted image will hang up the system.**

Update Firmware	
Location:	<input type="text"/> <input type="button" value="Browse..."/>
<input type="button" value="Apply"/>	

- After upgrade firmware is finished, the Router will reboot automatically.

### Tips:

1. Please select the correct firmware file; otherwise the router cannot work normally.
2. Don't power off the device when upgrading, avoid the device be damaged.

### (3) Setting Management

#### ➤ Export Settings

You can save the current system settings by exporting them to a configuration file.

#### ➤ Import Settings

Also you can restore the system settings by importing the configuration files

#### ➤ Load the factory Defaults

Press “Load Default” button, the system settings will be restored to original.

#### Load Factory Defaults

Load Default Button

Load Default

**Tips:** After you restore the defaults, the WIFI will disconnect, and you may need to recreate a connection again.

### (4) Status



This page shows the current status of WIFI router, including System Information, Internet Configurations and local network information.

### **(5) Statistics**

This page shows the current status of memory, data traffic of WAN and LAN.

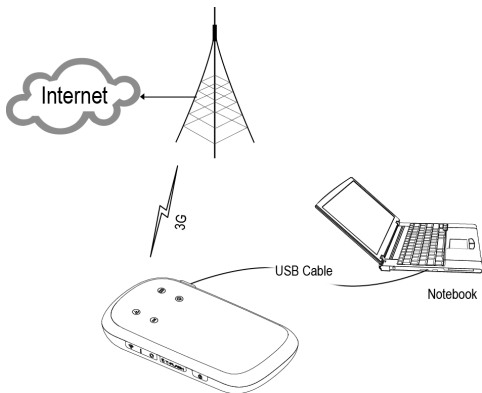
### **(6) System log**

This page shows logs of system.

## USB Modem

Switch off the device and connect with your computer through USB cable. Then the device will work in USB Modem mode.

In this modem, except access to internet, you can send/receive short messages, manage your contacts, and browse your MicroSD (T-Flash card) as well.



## Requirements

**OS:** Microsoft Windows™ XP SP2+, Vista, Windows 7, MAC OS 10.5 or later (Intel based CPU).

**Hardware:** 1GHz CPU or above, 256MB RAM or above, at least 100MB hard disk free, at least one standard USB interface.

## Install PC Suite and driver

1. Switch off the device and connect with PC via USB cable.
2. Install the PC Suite after the ZeroCD mounted.
3. Remove and re-connect to PC to start the PC Suite.
4. Follow up the User Manual of PC suite to use the modem.

**Tips:** To activate WIFI Router, press Power key till the WIFI LED light for a while.

## FAQs

Please troubleshoot the problems first according to the following table if an exception occurs. If the problem persists, please contact the distributor of the phone.

Problem	Solution
Cannot achieve the Router	<ol style="list-style-type: none"> <li>1. Make sure the wireless switch on your PC is on and refresh network list.</li> <li>2. Make sure your PC is in the valid range;</li> <li>3. Make sure your router keep away from Electromagnetic interference;</li> <li>4. Make Sure your router is be broadcasted;</li> <li>5. Reboot your router;</li> <li>6. Reset your Router by press <b>the Reset key.</b></li> </ol>
Cannot access the Internet	<ol style="list-style-type: none"> <li>1. Make sure your router is always in the valid range.</li> <li>2. Make sure you input the correct WIFI key.</li> <li>3. Make sure that your PC is using an IP address that is within the default range.</li> <li>4. Close firewall of your PC.</li> </ol>
Cannot logi	<ol style="list-style-type: none"> <li>1. Clear the cookies and caches of IE</li> </ol>

<p>n Web management Page</p>	<p>browsers  2. Close all IE browsers and Open again  3. Check the name and password of administrator is correct.</p>
<p>Cannot visit Internet</p>	<p>1. Check the 3G LED blink with green;  2. Check if your USIM is prepaid and have no enough balance;  3. Check if you select the correct APN account.  4. Check your device is assigned the available IP address;</p>

## Safety

### **Read this guidelines**

Read these simple guidelines. Not following them may be dangerous or illegal.

### **Switch on safely**

Do not switch the device on when wireless device use is prohibited or when it may cause interference or danger.

### **Interference**

All wireless devices may be susceptible to interference, which could affect performance.

### **Switch off in restricted areas**

Follow any restrictions. Switch the device off in aircraft, near medical equipment, fuel, chemicals, or blasting areas.

### **Qualified service**

Only qualified personnel may install or repair this product.

## **Accessories and batteries**

Use only approved accessories and batteries. Do not connect incompatible products.

## **Water-resistance**

Your device is not water-resistant. Keep it dry.

## **Small children**

Your device and its accessories are not toys. They may contain small parts. Keep them out of the reach of small children.

## **Potentially explosive environments**

Switch off your device in any area with a potentially explosive atmosphere. Obey all posted instructions. Sparks in such areas could cause an explosion or fire resulting in bodily injury or death.