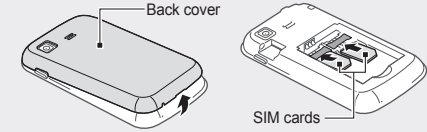
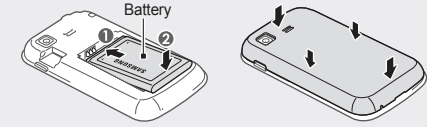


Install the SIM card and battery

- Remove the back cover and insert the SIM card.

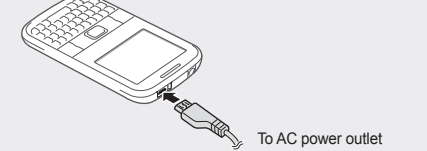


- Insert the battery and replace the back cover.



Charge the battery

- Plug the supplied travel adapter.
- When charging is finished, unplug the travel adapter.



Do not remove the battery from the phone before unplugging the travel adapter first. Otherwise, the phone may be damaged.

Make a call

- In Idle mode, enter an area code and a phone number.
- Press **[]** to dial the number.
- To end the call, press **[e]**.

Answer a call

- When a call comes in, press **[]**.
- To end the call, press **[e]**.

Adjust the volume

To adjust the volume of the ringtone

- In Menu mode, select **Settings** → **Sound profiles**.
- Scroll to the profile you are using.

If you are using the silent or offline profile, you are not allowed to adjust the volume of the ringtone.

- Press **<Edit>** → **Volume**.
- Scroll to **Call alert**.
- Scroll left or right to adjust the volume level and press **<Save>**.

Add a new contact

The memory location to save new contacts may be preset depending on your service provider. To change the memory location, in Menu mode, select **Contacts** → **<Options>** → **Settings** → **Save new contacts to** → a memory location.

- In Idle mode, enter a phone number and press the optical track pad.
- Select a memory location (if necessary).
- Select **Create contact**.
- Select a number type (if necessary).
- Enter contact information.
- Press the optical track pad, or press **<Options>** → **Save**.

Make fake calls

You can simulate an incoming call when you want to get out of meetings or unwanted conversations.

To activate the fake call feature

In Menu mode, select **Settings** → **Call** → **Fake call** → **Fake call hot key**.

To make a fake call

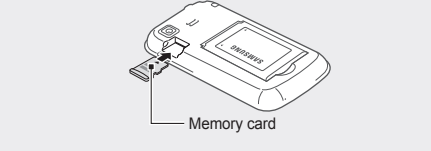
In Idle mode, press and hold the Volume key down.

Insert a memory card (optional)

Your phone accepts microSD™ or microSDHC™ memory cards up to 8 GB (depending on memory card manufacturer and type).



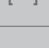
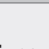
Formatting the memory card on a PC may cause incompatibility with your phone. Format the memory card only on the phone.

- Remove the back cover.
- Insert a memory card with the gold-coloured contacts facing down.



- Push the memory card in the memory card slot until it locks in place.
- Replace the back cover.

Instructional icons

	Note: notes, usage tips, or additional information
	Followed by: the order of options or menus you must select to perform a step; for example: In Menu mode, select Messages → Create message (represents Messages , followed by Create message)
	Square brackets: phone keys; for example: [e] (represents the Power/End key)
	Angled brackets: softkeys that control different functions at each screen; for example: <OK> (represents the OK softkey)

Turn your phone on or off

To turn your phone on,

- Press and hold **[e]**.
- Enter your PIN and press **<OK>** (if necessary).

To turn your phone off, repeat step 1 above.

Set the call time limit

You can set the maximum amount of outgoing call time.

- In Menu mode, select **Settings** → **Call** → **All calls** → **Call time limit**.
- Press **<Change>** to activate the call time limit feature.
- Scroll down and set the maximum call time.

Use the smart home screen

The smart home screen allows you to access your favourite applications and contacts and view upcoming events or tasks. You can customise the smart home screen to fit your preferences and needs.

To customise the smart home screen

- In Menu mode, select **Settings** → **Display** → **Smart home**.
- Press **<Edit>**.
- Select the items to display on the smart home screen.
- Press **<Options>** → **Save**.
- Press the optical track pad.

You can change the idle screen to another style. In Menu mode, select **Settings** → **Display** → **Smart home** and scroll left or right to a style you want.

Activate and send an SOS message

In an emergency, you can send SOS messages to your family or friends for help.

To activate the SOS message

- In Menu mode, select **Messages** → **Settings** → **SOS messages** → **Sending options**.
- Press **<Change>** to turn on the SOS message.
- Select **Recipients** to open the recipient list.
- Press **<Search>** to open your contact list. You can also enter phone numbers including a country code (with +) in the recipient list. Skip to step 7.
- Press **<Multiple>**.
- Select contacts → **<Add>**.
- When you are finished setting the recipients, press the optical track pad to save the recipients.
- Select **Repeats**, set the number of times to repeat the SOS message, and press **<Save>**.
- Press **<Back>** → **<Yes>**.

To send an SOS message

- With the phone locked, press either end of the Volume key four times to send an SOS message to preset numbers. The phone switches to SOS mode and sends the preset SOS message.
- To exit SOS mode, press **[e]**.

Manage your SIM cards

Your phone supports Dual SIM mode that enables you to use two SIM cards at the same time without changing them. Learn to activate SIM cards and change the card settings.

To switch networks

In Idle mode, press **[]** to switch between networks.

To activate SIM cards

- In Menu mode, select **Settings** → **SIM cards management**. You can also press and hold **[]** in Idle mode.
- Select **Network** and scroll left or right to a SIM card.
- Press **<Change>** to activate the card.

To switch SIM cards automatically

- In Menu mode, select **Settings** → **SIM cards management**.
- Select **SIM auto switch**.
- Press **<Change>** to activate the auto switch feature.
- Select a SIM card and set the starting and ending time to switch to the SIM card.
- Press **<Save>**.
- Repeat steps 4-5 for another SIM card.

To register SIM cards

- In Menu mode, select **Settings** → **SIM cards management**.
- Select **Register card**.
- Scroll left or right to a SIM card.
- Press **<Select>** and change the name and the icon of the card.

Access menus

To access your phone's menus,

- In Idle mode, press **<Menu>** or the optical track pad to access Menu mode.
- Use the optical track pad to scroll to a menu or option.
- Press **<Select>**, **<OK>**, or the optical track pad to confirm the highlighted option.
- Press **<Back>** to move up one level; Press **[e]** to close the menu or application and return to Idle mode.

When you access a menu requiring the PIN2, you must enter the PIN2 supplied with the SIM card. For details, contact your service provider. Samsung is not responsible for any loss of passwords or private information or other damages caused by illegal software.

T9 mode

- Press the appropriate alphanumeric keys to enter an entire word.
- When the word displays correctly, press **[]** to insert a space. If the correct word does not display, drag on the optical track pad up or down to select an alternate word.

ABC mode

Press an appropriate alphanumeric key to enter a character.

Number mode

Press an appropriate alphanumeric key to enter a number.

Symbol mode

Press an appropriate alphanumeric key to enter a symbol.

To move the cursor, drag on the optical track pad. To delete characters one by one, press **[]**. To delete characters quickly, press and hold **[]**. To insert a space between characters, press **[]**. To start a new line, press **[]**.

To access the smart home items

Drag on the optical track pad to scroll through the items on the smart home screen and press the optical track pad to select an item.

To customise the shortcuts toolbar

- In Menu mode, select **Settings** → **Display** → **Smart home**.
- Press **<Edit>**.
- Scroll to **Shortcuts toolbar** and press **<Options>** → **Edit shortcuts**.
- Select a menu to change or an empty location.
- Select the menus you want. Drag on the optical track pad right to select submenus (if necessary).
- Press **<Save>**.

Enter text

To change the text input mode

- Press **<Options>** → **Writing options** → **Writing language** to change the input language.
- Press **<Options>** → **Predictive text on** to switch to T9 mode.
- Press **[]** to open the symbol panel.
- Press **[]** to change case.

Use the camera

To capture photos

- In Idle mode, press **[]** to turn on the camera.
- Aim the lens at the subject and make any adjustments.
- Press the optical track pad or **[]** to take a photo. The photo is saved automatically.

To view photos

In Menu mode, select **My files** → **Images** → a photo file.

To capture videos

- In Idle mode, press **[]** to turn on the camera.
- Press **[1]** to switch to the camcorder.
- Aim the lens at the subject and make any adjustments.
- Press the optical track pad or **[]** to start recording.
- Press the optical track pad, **<Stop>**, or **[]** to stop recording. The video is saved automatically.

To view videos

In Menu mode, select **My files** → **Videos** → a video file.

Send and view messages

When you set the PC connection settings to mass storage and connect your phone to a PC, the PC will recognise your phone as a removable disk. If you format the removable disk, all multimedia messages and emails (including emails downloaded from Exchange server) saved in your phone will be deleted. Back up important data before formatting your phone on a PC.

To send a text or multimedia message

- In Menu mode, select **Messages** → **Create message**.
- Enter a recipient number and scroll down.
- Enter your message text. See *"Enter text."* For sending as a text message, skip to step 5. For attaching multimedia, continue with step 4.
- Press **<Options>** → **Add multimedia** and add an item.
- Press the optical track pad to send the message.

To view text or multimedia messages

- In Menu mode, select **Messages** → **Inbox**.
- Select a text or multimedia message.